

RECEPTION NEWSLETTER

☆ SUMMER TERM 2026 ☆



WELCOME BACK!

We cannot believe that this is our final half term before the children move on to Year 1! We are so proud of all that they've achieved already, and are excited start our final Topic together 'Our Natural World'.

2 Maths

This half term we are continuing our learning around sharing and grouping quantities to see if we can create equal groups. We will also learn about more complex patterns and use positional language to describe where and what orientation a shape should be to follow the pattern's rule.

4 RE

Our Big Question this half term is "How can we look after our Wonderful World?". We think about 'care takers' who look after our local area and community and what we can do to protect and care for it. We also learn about ways to protect animals and creatures who are endangered and run a messy church event for Nursery based on our Unit's theme!

6 Expressive Art & Design

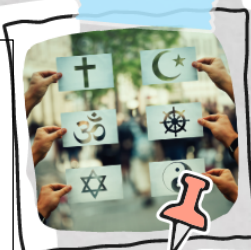
In Expressive Art and Design we are creating our very own rock pools, developing our observational drawing skills sketching seashells and creating collage landscapes of seaside scenes.

KEEPING IN TOUCH

Please ensure you keep class teachers up to date with any information or changes they need to be aware of.

ATTENDANCE

For your child to get the best out of school and maximise their learning, please make sure your child is on time and comes to school every day. School starts at 8.45am.



1 English

Our first text this half-term is 'The Wonder' about a boy whose head is full of wonder! We will write about our own daydreams and about the big questions we would like answers to. In 'Clean UP!' we think about how to look after our world and create poster slogans to encourage others to be caretakers of our beaches. We end with 'The Invisible', a touching story about different people's lived experiences and think about how we can show empathy.

3 Topic

Our exciting topic this half term is 'Our Natural World'. We open our new topic learning about an important historical figure and explorer, Amelia Earhart. We continue with some more mapwork, exploring the different continents and oceans that make up our world. Finally, look at how we can look after our world and consolidate our learning on seasonal change.

5 Phonics

This half term we move on to identify and read words containing Phase 5 GPC's! Some of these are 'alternatives', graphemes that produce the same sound but are recorded differently. This makes our mnemonics especially important, as we need to distinguish between different alternatives to support our spelling.

7 PE

The children are very excited to show off their physical development progression at Sports Day on the 2nd July! We often run a voluntary Parent's race so be sure to warm up!

8

Music



9

PSHE



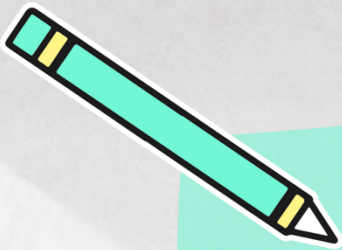
10

Art

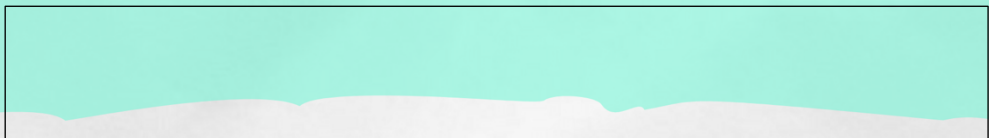


11

DT



Autumn Term Challenge



FOLLOW US ON



@STBARNABASSCH

