

# YEAR 6 NEWSLETTER

SPRING 2



## WELCOME BACK!

### Homework reminders:

- Weekly arithmetic test due on a Monday (30 mins)
- SATs companion to earn extra play!

## ATTENDANCE

For your child to get the best out of school and maximise their learning, please make sure your child is on time and comes to school every day. School starts at 8.50am.



## 1 English

We will be writing autobiographies from the perspective of a person on the "Empire Windrush" arriving in Britain.



## 2 Maths

This term, we will be learning:

- Algebra
- Fractions, Decimals and Percentages
- Statistics
- Position and Direction



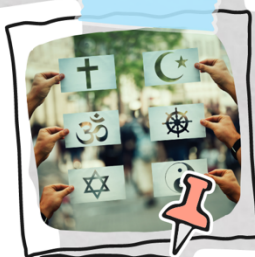
## 3 Science

Our topic is Light. We will look at how light travels, how colour is made and how our eyes are able to perceive things.



## 4 RE

In RE, we will explore the question, 'what does the resurrection mean to Christians?'



## 5 Computing

This term, we are looking at spreadsheets. We will be using Google Sheets.



## 6 Geog/Hist

In geography, we will be looking at settlements.



## 7 PE

Our topic this term is hockey.



## KEEPING IN TOUCH

Contact the office with any queries you may have!

## 8 Music

This term, we will begin practising our leaver's song.



## 9 PSHE

In PSHE, we will learn about the different types of drugs and the effect they have on our bodies. We will understand that some people may be exploited and understand what it means to be emotionally well.

## 10 Art

We will be doing a sculpture unit, creating our own creatures out of tissue paper.



## 11 DT

We will be designing and creating a revision board game.

# Spring Term Challenge

To earn extra play every Friday, by completed at least 30 minutes of SATs companion each week.

FOLLOW US ON



@STBARNABASSCH