

# RECEPTION NEWSLETTER

SPRING 2 TERM 2025



## WELCOME BACK!

Welcome back to all our families!

This half term we have lots of important dates for your diaries.

The 4<sup>th</sup> March is the Reception Inspire Parent Workshop (Focus: Phonics and Mastering Number) on the 3<sup>rd</sup> March, Reception go on their first school trip! We are so excited!

## ATTENDANCE

For your child to get the best out of school and maximise their learning, please make sure your child is on time and comes to school every day. School starts at 8.45am.



## 1 English

We begin this half term's Literacy with Each Peach Pear Plum, through which we make connections to a variety of nursery rhymes and traditional tales. We'll also incorporate music into our storytimes with the 'Story Orchestra', we will think about how scenes in the story and the accompanying music affect us.



## 2 Maths

In Maths this half term, we begin to explore odd and even numbers by identifying pairs within a whole, and begin learning about doubling. We also look at length, height and time to start to compare and measure using non-standard units of measure.

Remember to access Numbots at home to support your child's automatic recall of number facts to 5 and 10.



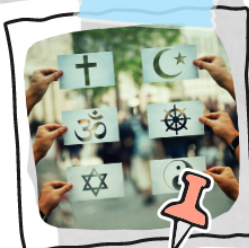
## 3 Topic

Our Topic is 'Time to Grow', we are learning about the past and present through 'Peepo' and comparing life now to life long ago. We visit the farm to consolidate our learning about seasonal change and to introduce our learning about plants after Easter and we will order events in our living memory.



## 4 RE

Our Big Question this half term is "Why do Christians put crosses in Easter gardens?". We'll be looking at the Easter story and, in detail, at the significance of the Cross as a symbol in Christianity. Later this term, we will be inviting parents and carers to an Easter Bonnet Parade.



## 5 Phonics

This half term is an opportunity to strengthen our retrieval of Phase 3 sounds before we move on to Phase 5. We'll be reading words with more complex structures and learning about the spelling rules that link some of our HRSW (harder to read and spell words).



## 6 Expressive Art & Design

The children will be creating junk model instruments as we read the 'Story Orchestra' in our Structured Storytimes. We will choose the instrument that we wish to base ours upon and think carefully about the materials we use so that our instruments can make real sounds.



## 7 PE

In PE this half term the children will be focused on ball skills. We will be learning how to throw, catch and control balls as we move around a space.



## KEEPING IN TOUCH

Please ensure you keep class teachers up to date with any information or changes they need to be aware of.

8

Music



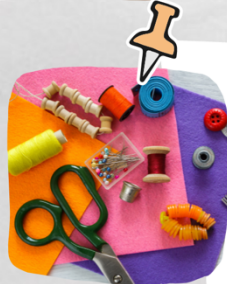
9

PSHE



10

Art

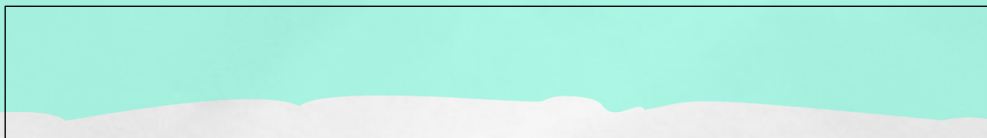


11

DT



# Autumn Term Challenge



FOLLOW US ON



@STBARNABASSCH

